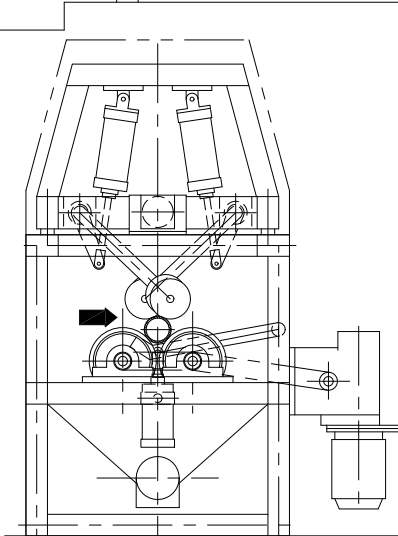
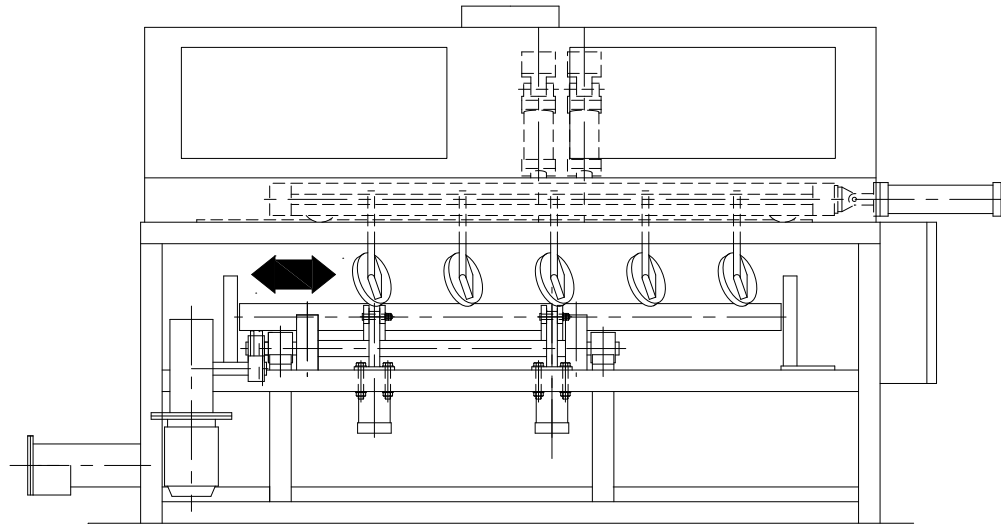
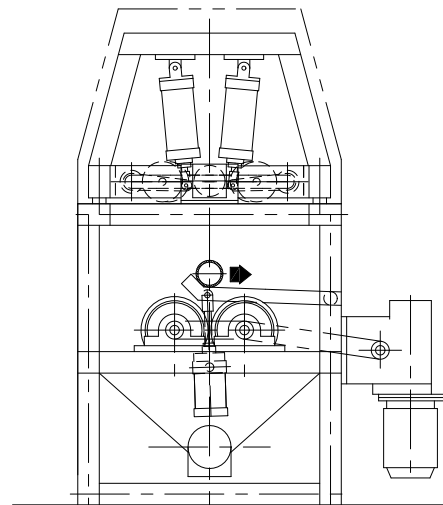


# TUBE BRUSHING MACHINE-BM2



End view showing tube brushing  
in operation



End view showing tube ejection  
in operation

The tube brushing unit is a high throughput machine designed for cleaning centrifugally cast tubes prior to machining or onward processing. The tube brushing machines have been developed as a cost effective alternative to shot blasting. The BM models have a low power consumption due to the unique angular oscillating motion of the brushes. The compound angle of the brushes enables a scrub cleaning effect with minimum brush wear.

Benefits over shot blasting are as follows:-

- |                          |                           |
|--------------------------|---------------------------|
| 1. Lower capital cost    | 3. Virtually silent       |
| 2. Lower consumable cost | 4. Less space requirement |



HILLTOP WORKS,  
EASTERN AVENUE, LICHFIELD,  
STAFFORDSHIRE, WS13 6UY, ENGLAND

Telephone +44(0)1543 418701. Fax +44(0)1543 418703.

Email: [sales@gibsoncentritech.co.uk](mailto:sales@gibsoncentritech.co.uk)

Web site: [www.gibsoncentritech.co.uk](http://www.gibsoncentritech.co.uk)

**DESIGNERS and MANUFACTURERS of CENTRIFUGAL CASTING MACHINES**